

Engine	Cummins QSM11-C335
Gross Power	250 kW (335 hp) @ 2,100 rpm
Net Power	238 kW (319 hp) @ 2,100 rpm
Operating Weight	30,000 kg
Standard Bucket Size	4.5 m <sup>3</sup>
Standard Breakout Force	260 kN
Standard Dump Clearance	3,330 mm

# 888III

WHEEL LOADER



TOUGH WORLD. TOUGH EQUIPMENT.

# 888III SPECIFICATIONS >>>

## ENGINE

Emission Regulation	Tier 3 / Stage IIIA
Make	Cummins
Model	QSM11-C335
Gross Power	250 kW (335 hp) @ 2,100 rpm
Net Power	238 kW (319 hp) @ 2,100 rpm
Peak Torque	1,674 N · m @ 1,400 rpm
Displacement	10.8 L
Number of Cylinders	6
Aspiration	Turbocharged & Air-to-air intercooled

## TRANSMISSION

Transmission Type	Countershaft, power shift
Torque Converter	Single stage, three elements
Maximum Travel Speed, fwd	35.5 km/h
Maximum Travel Speed, rev	25 km/h
Number of Speeds, fwd	4
Number of Speeds, rev	3

## AXLES

Differential Front Type	Conventional
Differential Rear Type	Conventional
Axle Oscillation	±13°

## STEERING

Steering Configuration	Articulated
Steering Relief Pressure	20 MPa

## BRAKES

Service Brake Type	Wet discs brake
Service Brake Actuation	Hydraulic
Parking Brake Type	Manual electronic control
Parking Brake Actuation	Hydraulic

## HYDRAULIC SYSTEM

Main Pump Type	Vane
Main Relief Pressure	20.7 MPa
Raise Time	7 s
Dump Time	1.6 s
Float Down Time	3.3 s
Fastest Total Cycle Time	11.9 s

## LOADER ARM PERFORMANCE

Tipping Load - Straight	25,755 kg
Tipping Load - Full Turn	21,960 kg
Bucket Breakout Force	260 kN
Maximum Dump Angle at Full Height	45°
Dump Clearance at Full Height Discharge	3,330 mm
Dump Reach at Full Height Discharge	1,460 mm
Maximum Hinge Pin Height	4,490 mm
Maximum Digging Depth, Bucket Level	118 mm
Bucket Rollback at Ground Level	45°
Bucket Rollback at Carry	49°
Bucket Rollback at Maximum Height	63°

## BUCKET PERFORMANCE

Reference Bucket	4.5 m <sup>3</sup>
------------------	--------------------

## DIMENSIONS

Length with Bucket Down	9,270 mm
Width Over Tires	3,170 mm
Wheelbase	3,530 mm
Wheel Tread	2,420 mm
Ground Clearance	476 mm
Turn Angle, Either Side	38 °
Rear Angle of Departure	24.5°
Turning Radius, Outside of Tire	6,760 mm
Turning Radius, Center of Tire	6,335 mm
Turning Radius, Bucket Carry	7,570 mm

## TIRES

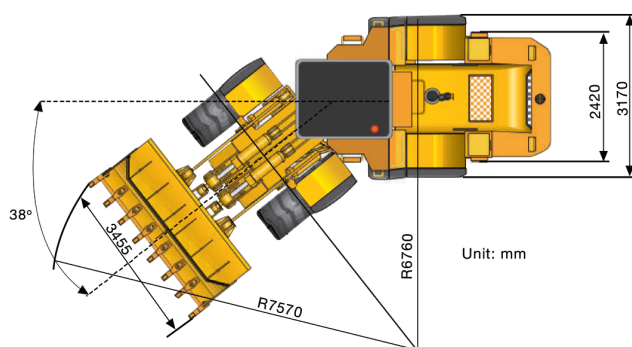
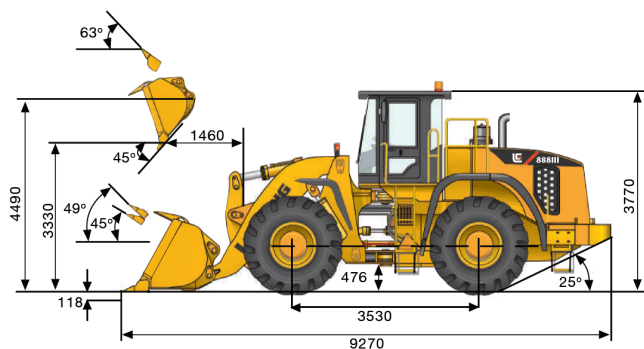
Tire Size	29.5 R 25
-----------	-----------

## OPERATING WEIGHTS

Operating Weight	30,000 kg
------------------	-----------

## SERVICE CAPACITIES

Fuel Tank	445 L
Engine Oil	33 L
Cooling System	41 L
Hydraulic Reservoir	250 L
Transmission and Torque Converter	70 L
Axles, each	65 L



Guangxi Liugong Machinery Co., Ltd.

No. 1 Liutai Road, Liuzhou, Guangxi 545007, PR China  
T: +86 772 3886124 E: overseas@liugong.com  
www.liugong.com

Specifications and designs are subject to change without notice. Machines shown may include optional equipment.

05/2014 Designed by Liugong