

| | |
|-------------------------|-----------------------------|
| Engine | Cummins QSB6.7 |
| Gross Power | 119 kW (160 hp) @ 2,200 rpm |
| Net Power | 108 kW (145 hp) @ 2,200 rpm |
| Operating Weight | 13,300 kg |
| Standard Bucket Size | 1.9 m ³ |
| Standard Breakout Force | 104 kN |
| Standard Dump Clearance | 2,872 mm |

835III

WHEEL LOADER

 **LIUGONG**



TOUGH WORLD. TOUGH EQUIPMENT.

835III SPECIFICATIONS >>>

ENGINE

| | |
|---------------------|---------------------------------------|
| Emission Regulation | Tier 3 / Stage IIIA |
| Make | Cummins |
| Model | QSB6.7 |
| Gross Power | 119 kW (160 hp) @ 2,200 rpm |
| Net Power | 108 kW (145 hp) @ 2,200 rpm |
| Peak Torque | 732 N · m @ 1,400 rpm |
| Displacement | 6.7 L |
| Number of Cylinders | 6 |
| Aspiration | Turbocharged & Air-to-air intercooled |

TRANSMISSION

| | |
|---------------------------|------------------------------|
| Transmission Type | Countershaft, power shift |
| Torque Converter | Single stage, three elements |
| Maximum Travel Speed, fwd | 38 km/h |
| Maximum Travel Speed, rev | 23.7 km/h |
| Number of Speeds, fwd | 4 |
| Number of Speeds, rev | 3 |

AXLES

| | |
|-------------------------|--------------|
| Differential Front Type | Limited slip |
| Differential Rear Type | Limited slip |
| Axle Oscillation | ±11° |

STEERING

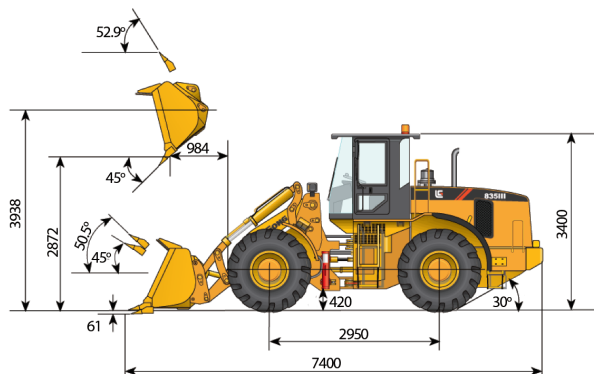
| | |
|--------------------------|-------------|
| Steering Configuration | Articulated |
| Steering Relief Pressure | 15 Mpa |

BRAKES

| | |
|-------------------------|---------------------------|
| Service Brake Type | Wet discs brake |
| Service Brake Actuation | Hydraulic |
| Parking Brake Type | Manual electronic control |
| Parking Brake Actuation | Hydraulic |

HYDRAULIC SYSTEM

| | |
|--------------------------|----------|
| Main Pump Type | Vane |
| Main Relief Pressure | 20.7 MPa |
| Raise | 5.6 s |
| Dump Time | 2.1 s |
| Float Down Time | 3.8 s |
| Fastest Total Cycle Time | 11.5 s |



LOADER ARM PERFORMANCE

| | |
|---|----------|
| Tipping Load - Straight | 9,380 kg |
| Tipping Load - Full Turn | 8,160 kg |
| Bucket Breakout Force | 104 kN |
| Maximum Dump Angle at Full Height | 45° |
| Dump Clearance at Full Height Discharge | 2,872 mm |
| Dump Reach at Full Height Discharge | 984 mm |
| Maximum Hinge Pin Height | 3,938 mm |
| Maximum Digging Depth, Bucket Level | 61 mm |
| Bucket Rollback at Ground Level | 45° |
| Bucket Rollback at Carry | 50.5° |
| Bucket Rollback at Maximum Height | 52.9° |

BUCKET PERFORMANCE

| | |
|------------------|--------|
| Reference Bucket | 1.9 m³ |
|------------------|--------|

DIMENSIONS

| | |
|---------------------------------|----------|
| Length with Bucket Down | 7,400 mm |
| Width Over Tires | 2,470 mm |
| Wheelbase | 2,950 mm |
| Wheel Tread | 1,950 mm |
| Ground Clearance | 420 mm |
| Turn Angle, Either Side | 40° |
| Rear Angle of Departure | 30° |
| Turning Radius, Outside of Tire | 5,340 mm |
| Turning Radius, Center of Tire | 5,080 mm |
| Turning Radius, Bucket Carry | 5,880 mm |

TIRES

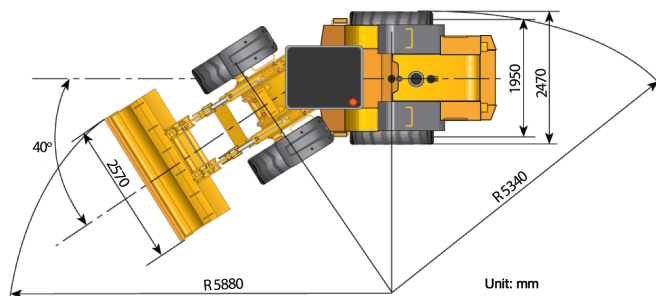
| | |
|-----------|-----------|
| Tire Size | 20.5 R 25 |
|-----------|-----------|

OPERATING WEIGHTS

| | |
|------------------|-----------|
| Operating Weight | 13,300 kg |
|------------------|-----------|

SERVICE CAPACITY

| | |
|-----------------------------------|-------|
| Fuel Tank | 240 L |
| Engine Oil | 15 L |
| Cooling System | 35 L |
| Hydraulic Reservoir | 150 L |
| Transmission and Torque Converter | 28 L |
| Axle, Front | 34 L |
| Axle, Rear | 28 L |



Guangxi Liugong Machinery Co., Ltd.

No. 1 Liutai Road, Liuzhou, Guangxi 545007, PR China
T: +86 772 3886124 E: overseas@liugong.com
www.liugong.com

Specifications and designs are subject to change without notice. Machines shown may include optional equipment.

05/2014 Designed by Liugong